

ST MARYS | | | | | | | | | |  
WESTERN PRECINCT  
LANDSCAPE MAINTENANCE & HANDOVER PLAN (LMAH)

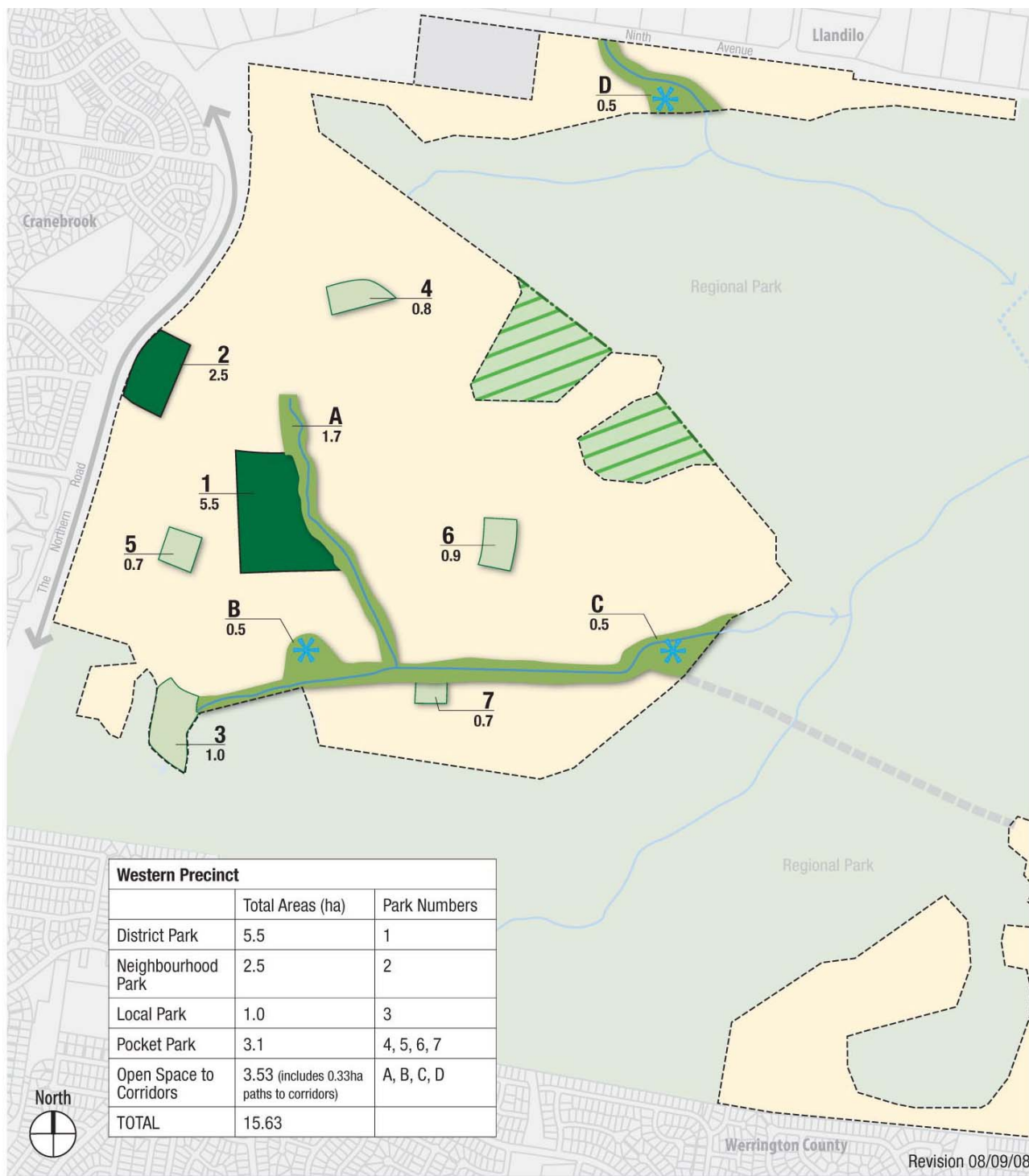


Updated

March 2009

Key	Item	Possible Level of Recreation provision / Embellishment	Presentation / maintenance Level	Ongoing recurrent Maintenance task for Council	How Serviced	Frequency October - April	Frequency May - September
1.0	Regional Park	Interpretive centre Walking trails Bush setting picnic areas		NA			
2.0	District Facilities			Subject to development agreement			
3.0	Corridors						
	Corridors generally	Re-establishment of creekline Facilitate bush regeneration Selective regeneration Pedestrian / cycle path link Interpretive art / information	Natural	Rubbish removal Clear GPT / other devices Weed monitoring / spraying to OS edges Aquatic weed management Re-mulching as required Ongoing revegetation as required	Day labour Contract Day labour & contract Contract Day labour & contract Day labour & contract	Once per month Once per month Once per month Once per month Once per month Monitor every six months	Once per 2 months Once per 2 months Once per 2 months Once per 2 months Once per 2 months Monitor every six months
	Bushfire Protection Zone	Managed native grass and recreational grass understorey Selective native tree interplanting Pedestrian / cycle path links Interpretive art / information Limited local entries to regional park access network	Suburban	Rubbish removal Weed monitoring / spraying to OS edges Understorey control	Day labour & contract Day labour & contract Day labour & contract	Once per week Once per week Once per week Once per week Monitor every six months	Once per month Once per month Once per month Once per month Monitor every six months
	Drainage swales / WSUD measures to road corridors / open space	• Drainage structures / infrastructure • Littoral planting / revegetation	Natural	Maintenance of infrastructure / cleaning  Rubbish removal	Day labour & contract  Day labour & contract	Once per 4 weeks and after major events Once per 2 weeks	Once per 4 weeks and after major events Once per 2 weeks
4.0	District & Neighbourhood Parks						
	Oval	playing fields tennis courts basketball / netball courts Amenities block parking area Playing field irrigation	Suburban	<b>Active Reserve</b> Playing field grass cutting Cutting of surrounds Paved area weeding Edging of paths and kerbs Weeding of gardens Litter collection Dumped rubbish removal Amenities block cleaning Irrigation repair and maintenance	Day labour Day labour & contract Day labour & contract Day labour & contract Day labour Day labour & contract Day labour & contract Day labour Day labour	Once per week Once per week Once per 4 weeks Once per 4 weeks Once per 4 weeks Once per 4 weeks Before mowing Twice weekly Every six months	Once per 2 weeks Once per 4 weeks Once per 8 weeks Once per 8 weeks Once per 8 weeks Once per 8 weeks Before mowing Twice weekly Every six months
	Passive Parkland	Passive recreational grassland and supporting facilities		<b>Landscaped Reserve</b> Grass cutting Cutting of surrounds Paved area weeding Edging of paths and kerbs Gardens maintenance Litter collection Dumped rubbish removal Playground inspections and vandalism follow up BBQ inspections and cleaning	Day labour Day labour Day labour Day labour Day labour Day labour Day labour Day labour Day labour	Once per week Once per 2 weeks Once per 2 weeks Once per 2 weeks Once per 2 weeks twice per week Before mowing Monthly Weekly	Once per 2 weeks Once per 2 weeks Once per 2 weeks Once per 2 weeks Once per 2 weeks twice per week Before mowing Monthly Weekly
5.0	Local Parks						
	Local Parks generally	Kick about area Shaded seating area Toddlers and childrens playgrounds Path linkages Picnic / BBQ facilities Native canopy tree planting Limited garden bed planting Public art integrated with design 20 parking spaces on adjoining street frontage Garden bed and grassed area irrigation	Suburban & Natural	<b>Landscaped Reserve</b> Grass cutting Cutting of surrounds Paved area weeding Edging of paths and kerbs Gardens maintenance Litter collection Dumped rubbish removal Playground inspections and vandalism follow up BBQ inspections and cleaning	Day labour Day labour Day labour Day labour Day labour Day labour Day labour Day labour Day labour	Once per week Once per 2 weeks Once per 2 weeks Once per 2 weeks Once per 2 weeks Once per 2 weeks twice per week Before mowing Monthly Weekly	Once per 2 weeks Once per 2 weeks Once per 2 weeks Once per 2 weeks Once per 2 weeks Once per 2 weeks twice per week Before mowing Monthly Weekly
6.0	Pocket Parks						
	Pocket Parks generally	Open grassed area Shaded seating areas Internal / street Path linkages Native canopy tree planting Limited garden bed planting Public art integrated with design Garden bed and grassed area irrigation	Suburban	<b>Passive Reserve</b> Grass cutting Paved area weeding Edging of paths and kerbs Weeding of gardens Litter collection Dumped rubbish removal Playground inspections and vandalism follow up	Day labour Day labour & contract Day labour & contract Day labour Day labour & contract Day labour & contract Day labour	Once per week Once per 4 weeks Once per 4 weeks Once per 4 weeks Once per 4 weeks Before mowing Monthly	Once per 4 weeks Once per 8 weeks Once per 8 weeks Once per 8 weeks Once per 8 weeks Before mowing Before mowing
7.0	Streetscapes / access						
	Streetscape generally	• Open grassed area • Internal / street path linkages • Native canopy tree planting • Garden bed planting • Public art integrated with design • Garden bed and grassed area irrigation	Suburban	Grass cutting Paved area weeding Edging of paths and kerbs Weeding of gardens Litter collection Dumped rubbish removal	Day labour Day labour & contract Day labour & contract Day labour Day labour & contract Day labour & contract	Once per week Once per 4 weeks Once per 4 weeks Once per 4 weeks Once per 4 weeks Before mowing	Once per 4 weeks Once per 8 weeks Once per 8 weeks Once per 8 weeks Once per 8 weeks Before mowing

Figure 3.3 Open space maintenance requirements



### Open Space Master Plan

- Riparian Corridor / Parkland
- Passive Open Space
- Active Open Space
- Regional Park Passive Open Space Opportunity (approx. size 11ha)
- Water Management Basin/Lake

Note: Location of all elements indicative only, subject to confirmation via detailed design.

Figure 3.4 Western Precinct Open Space Masterplan