

LEGEND

 Flood Planning Area

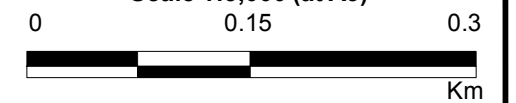
Notes:

Water depths less than 0.15m not displayed.
Aerial photograph date: 2014.

Inundation across this area not mapped. Please refer to "Updated South Creek Flood Study" - (Worley Parsons, 2015)




Scale 1:5,000 (at A3)

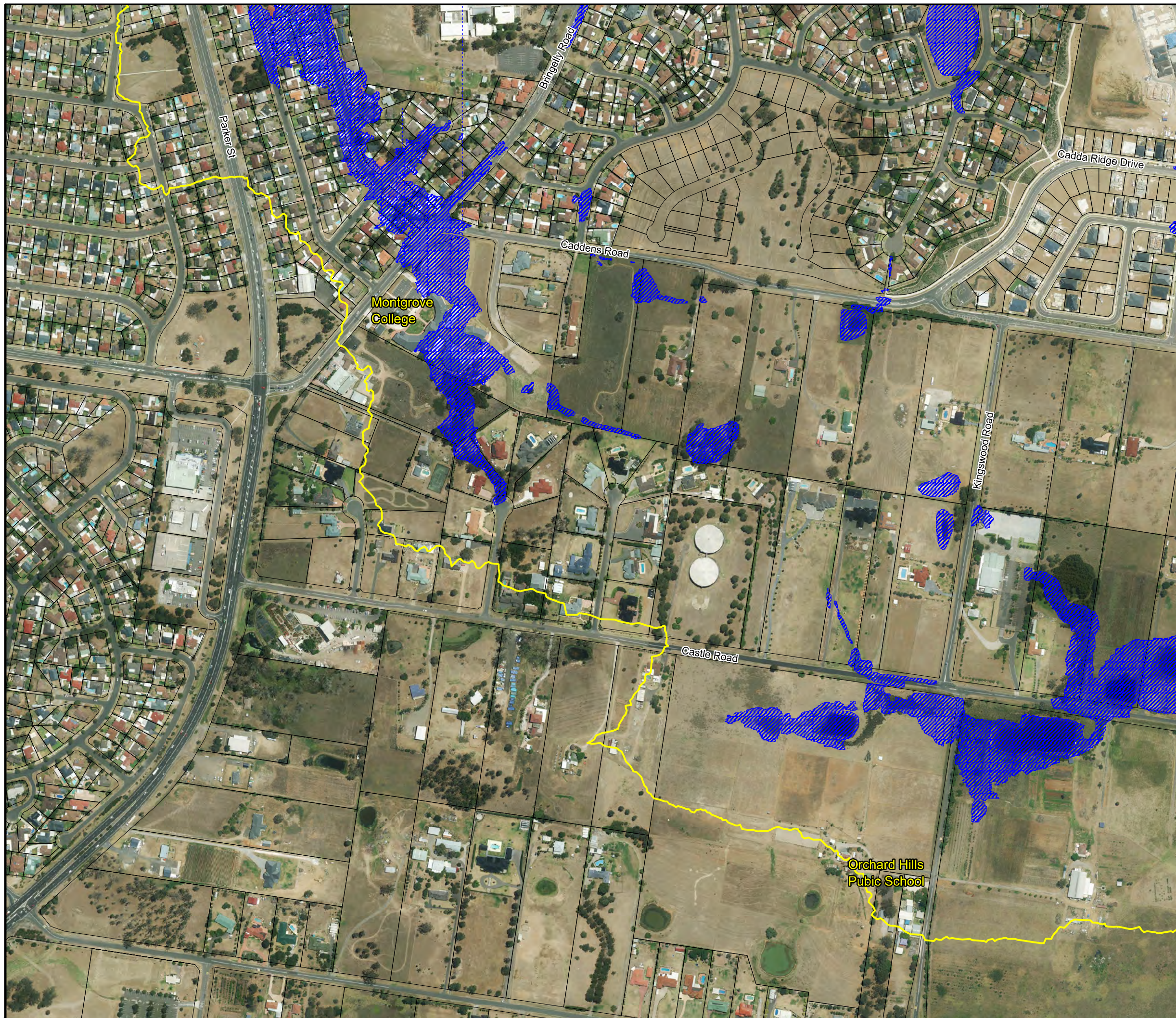


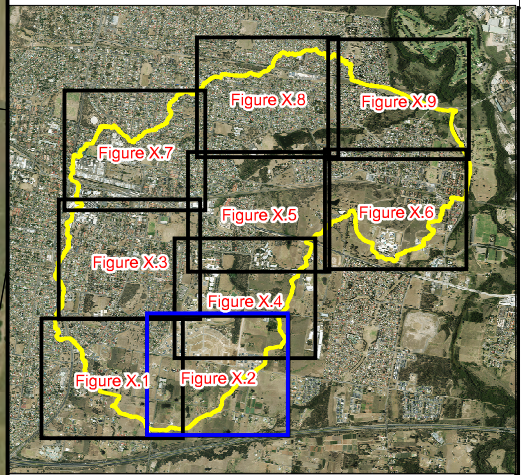
**Figure 55.1:
Flood Planning Area**

Prepared By:

 **Catchment Simulation Solutions**
Suite 2.01, 210 George St
Sydney, NSW 2000

File Name: Fig55.1 Flood Planning Area.wor





LEGEND

 Flood Planning Area

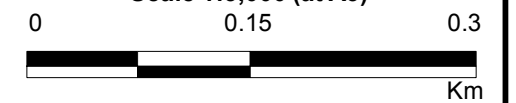
Notes:

Water depths less than 0.15m not displayed.
Aerial photograph date: 2014.

Inundation across this area not mapped. Please refer to "Updated South Creek Flood Study" - (Worley Parsons, 2015)




Scale 1:5,000 (at A3)

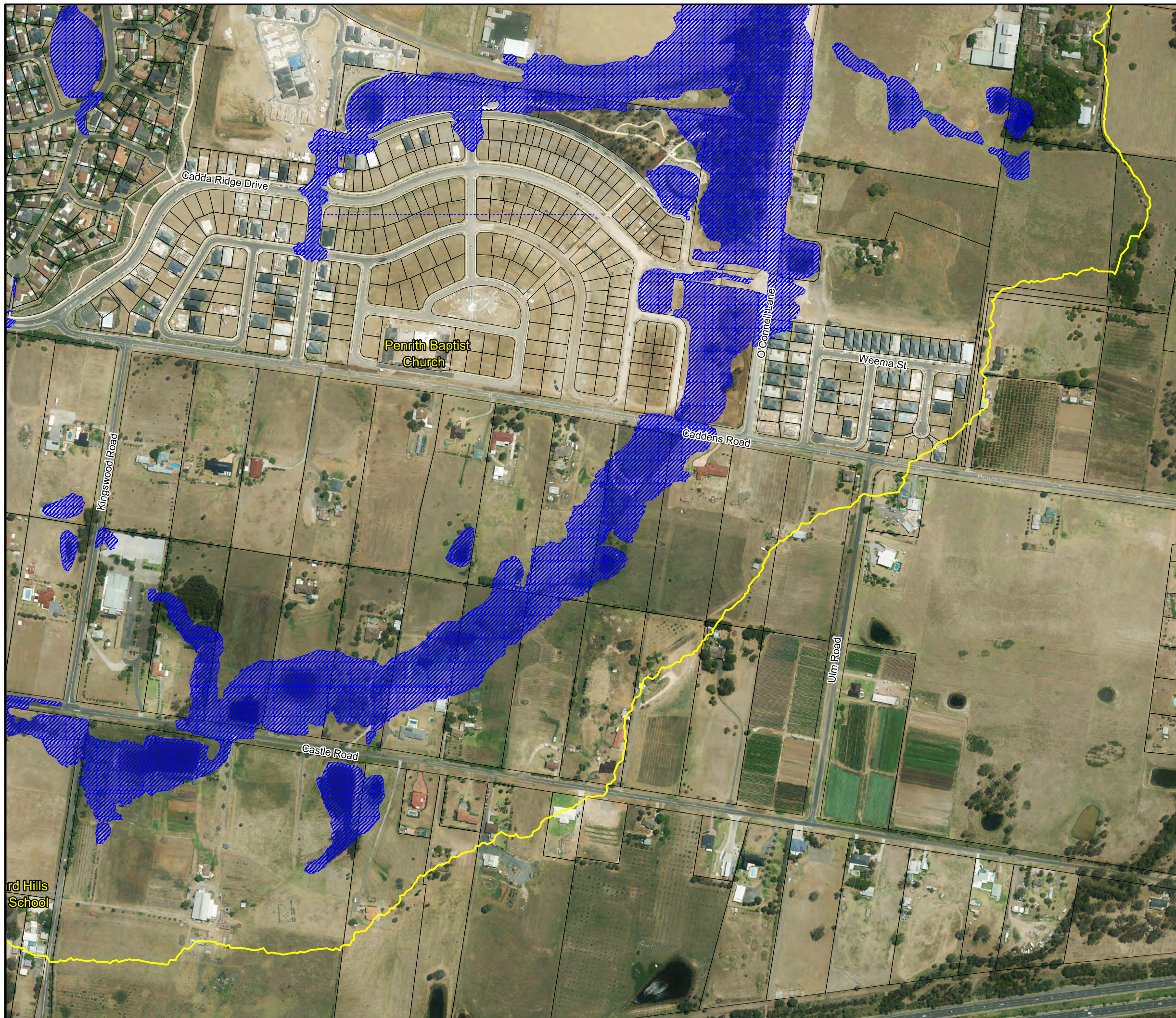


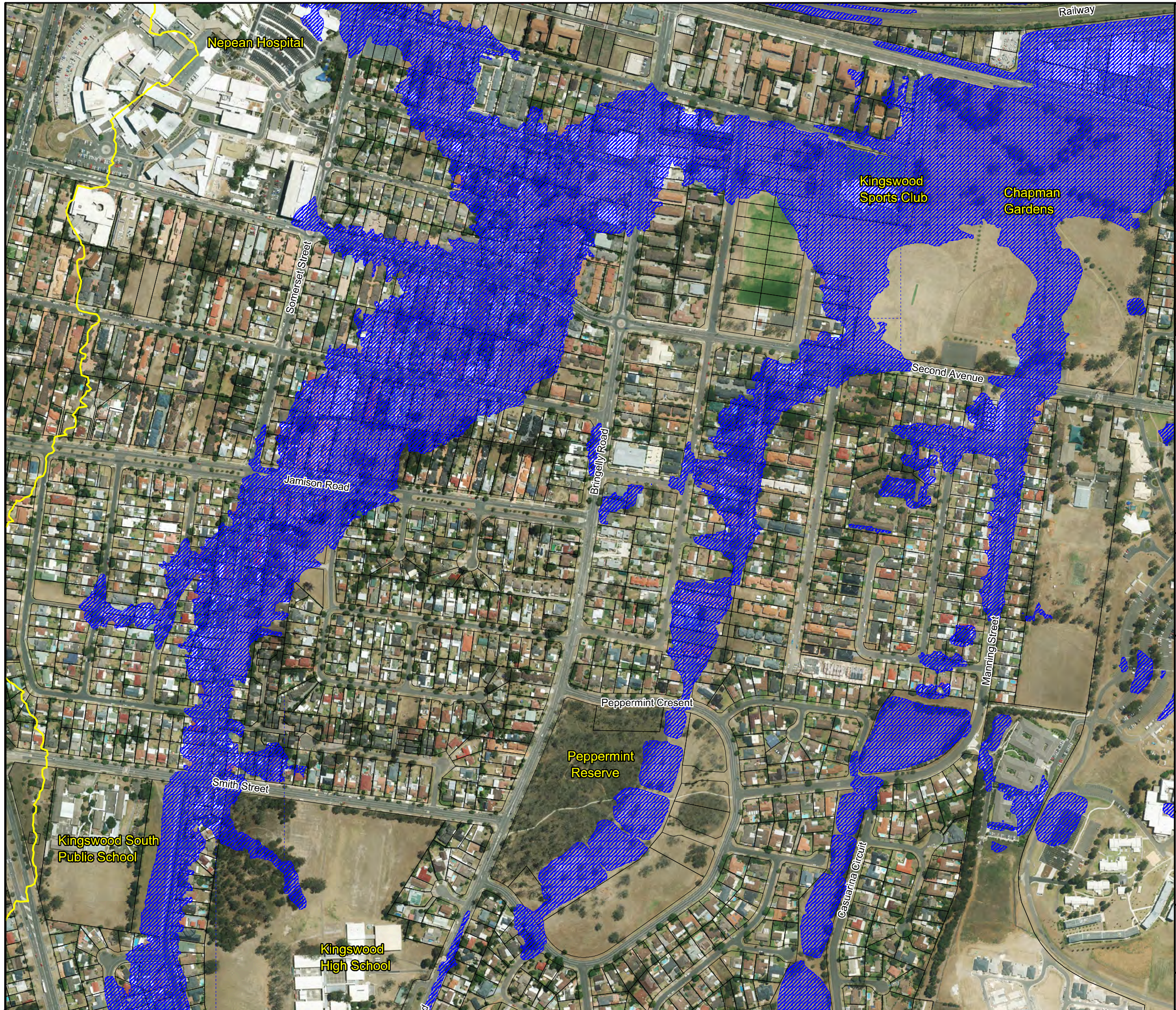
**Figure 55.2:
Flood Planning Area**

Prepared By:

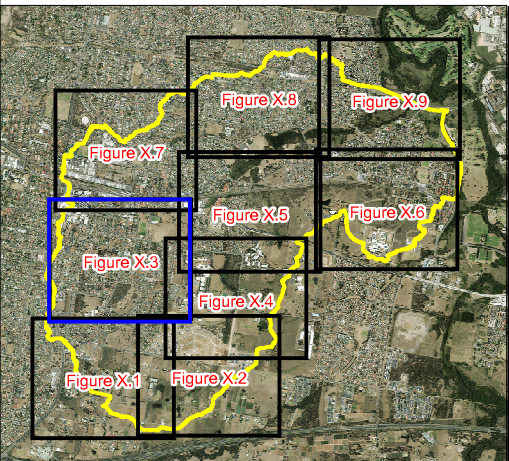
 **Catchment Simulation Solutions**
Suite 2.01, 210 George St
Sydney, NSW 2000

File Name: Fig55.2 Flood Planning Area.wor





PENRITH CITY COUNCIL



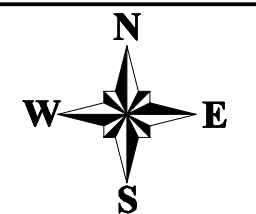
LEGEND

 Flood Planning Area

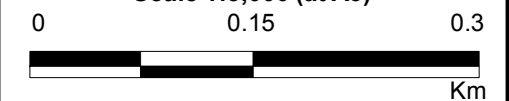
Notes:

Water depths less than 0.15m not displayed.
Aerial photograph date: 2014.

Inundation across this area not mapped. Please refer to "Updated South Creek Flood Study" - (Worley Parsons, 2015)




Scale 1:5,000 (at A3)

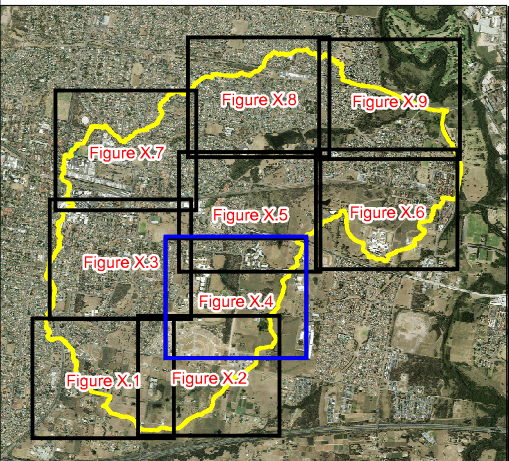


**Figure 55.3:
Flood Planning Area**

Prepared By:

 **Catchment Simulation Solutions**
Suite 2.01, 210 George St
Sydney, NSW 2000

File Name: Fig55.3 Flood Planning Area.wor



LEGEND

 Flood Planning Area

Notes:

Water depths less than 0.15m not displayed.
Aerial photograph date: 2014.

Inundation across this area not mapped. Please refer to "Updated South Creek Flood Study" - (Worley Parsons, 2015)

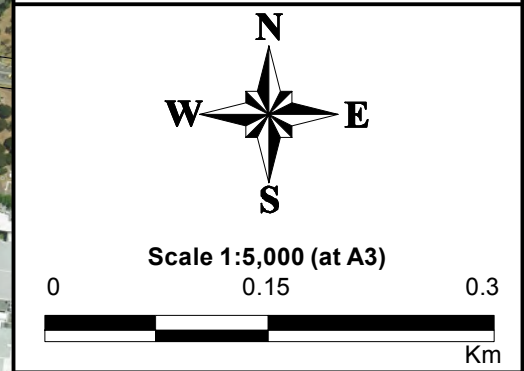

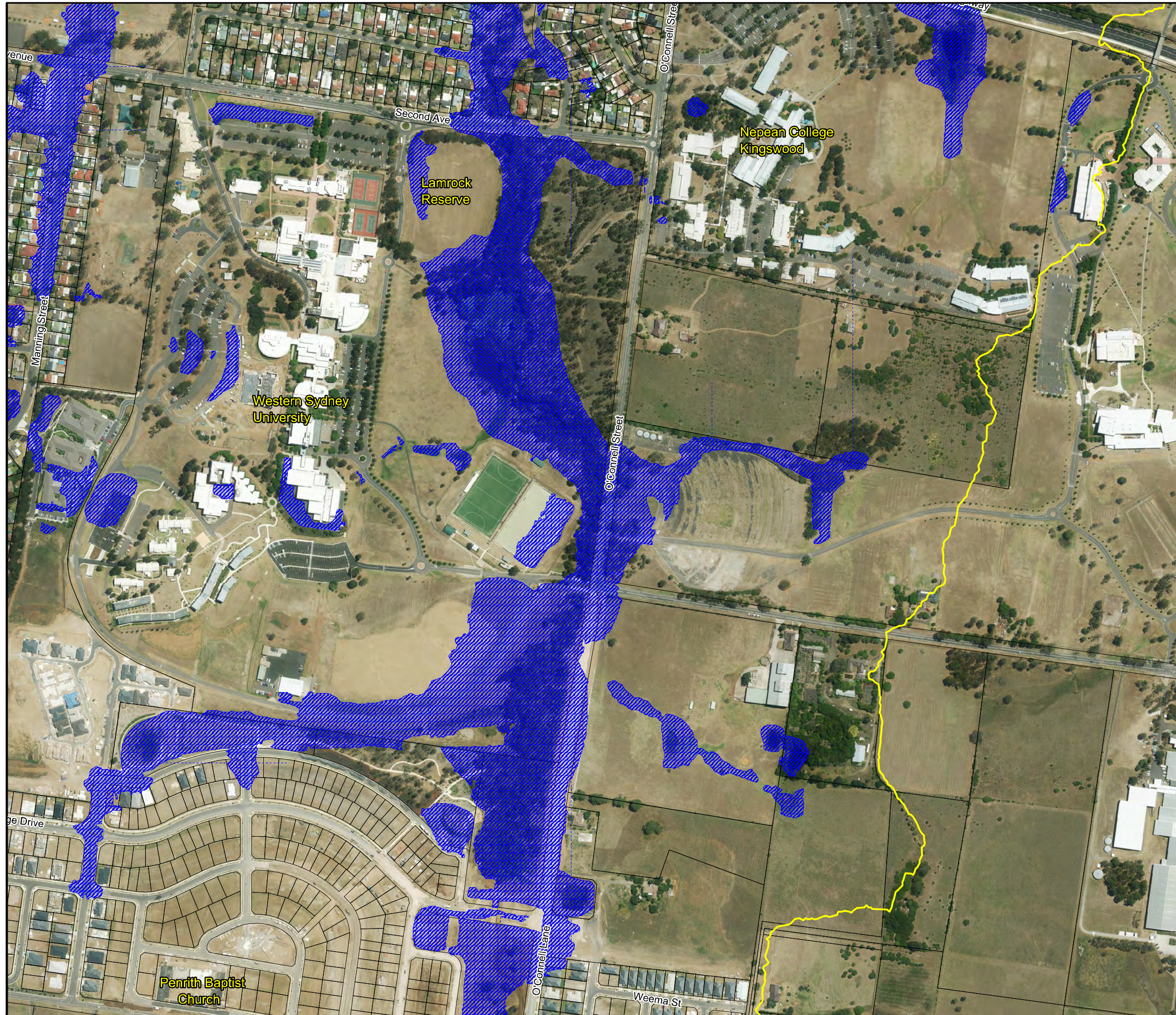
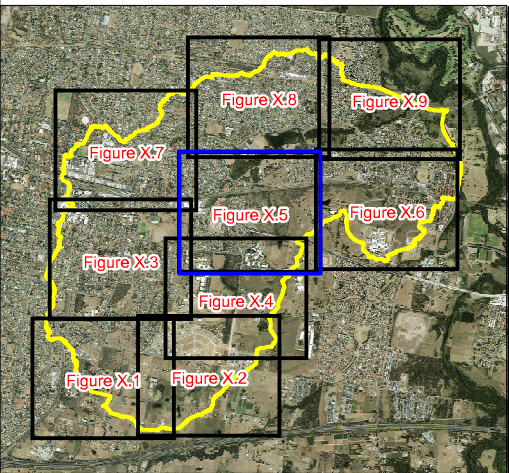


Figure 55.4:
Flood Planning Area

Prepared By:
 **Catchment Simulation Solutions**
Suite 2.01, 210 George St
Sydney, NSW 2000

File Name: Fig55.4 Flood Planning Area.wor





LEGEND

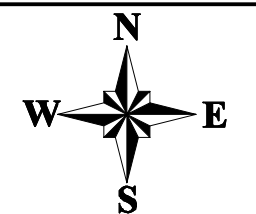
 Flood Planning Area

Preliminary flood behaviour across this area is based upon design terrain information which may not reflect final topography. Therefore, the results shown in this area are preliminary and subject to further confirmation through the finalisation of the subdivision

Notes:

Water depths less than 0.15m not displayed.
Aerial photograph date: 2014.

Inundation across this area not mapped. Please refer to "Updated South Creek Flood Study" - (Worley Parsons, 2015)



Scale 1:5,000 (at A3)

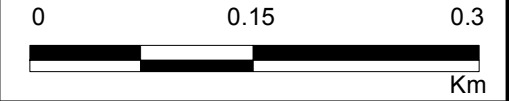

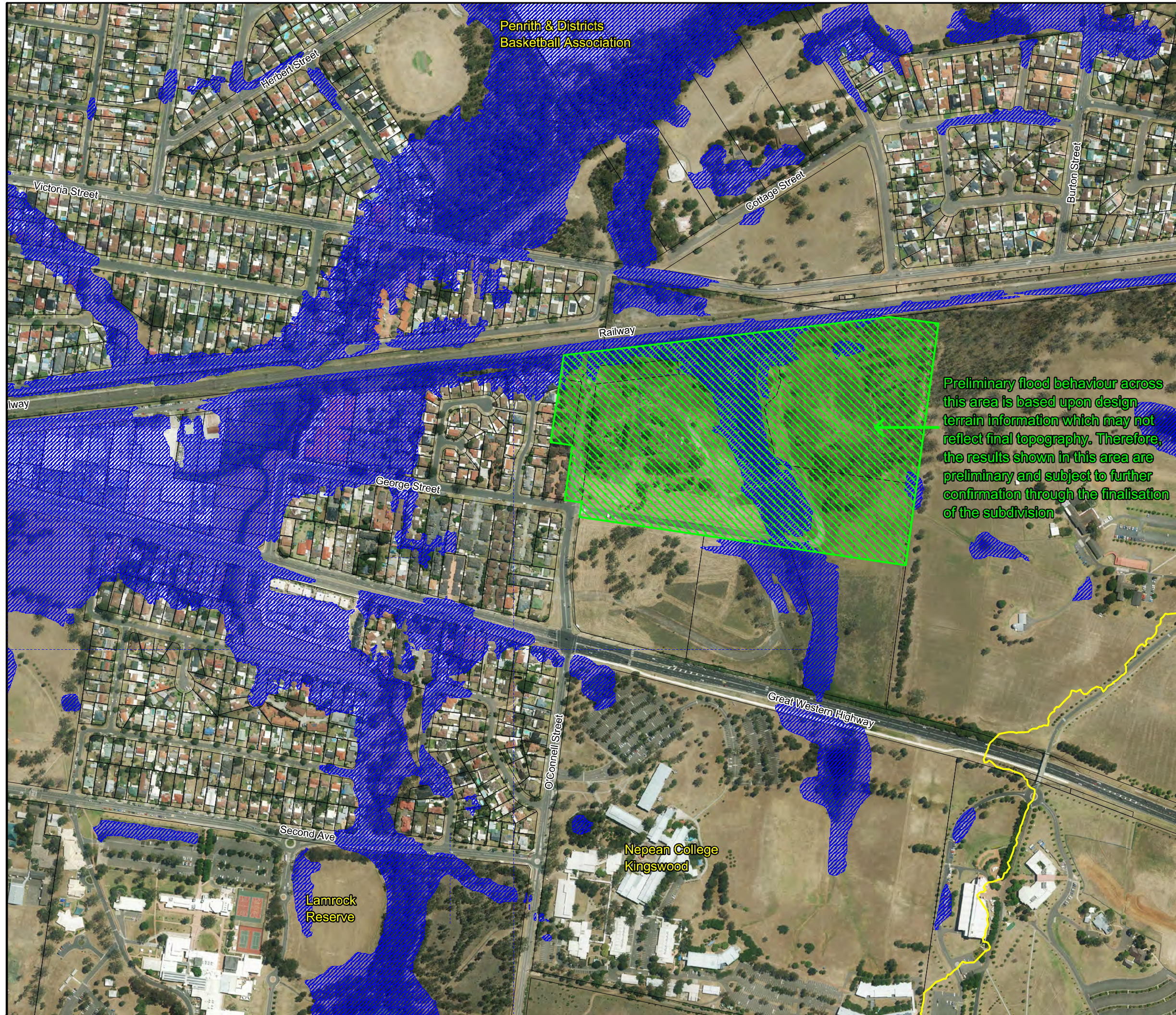


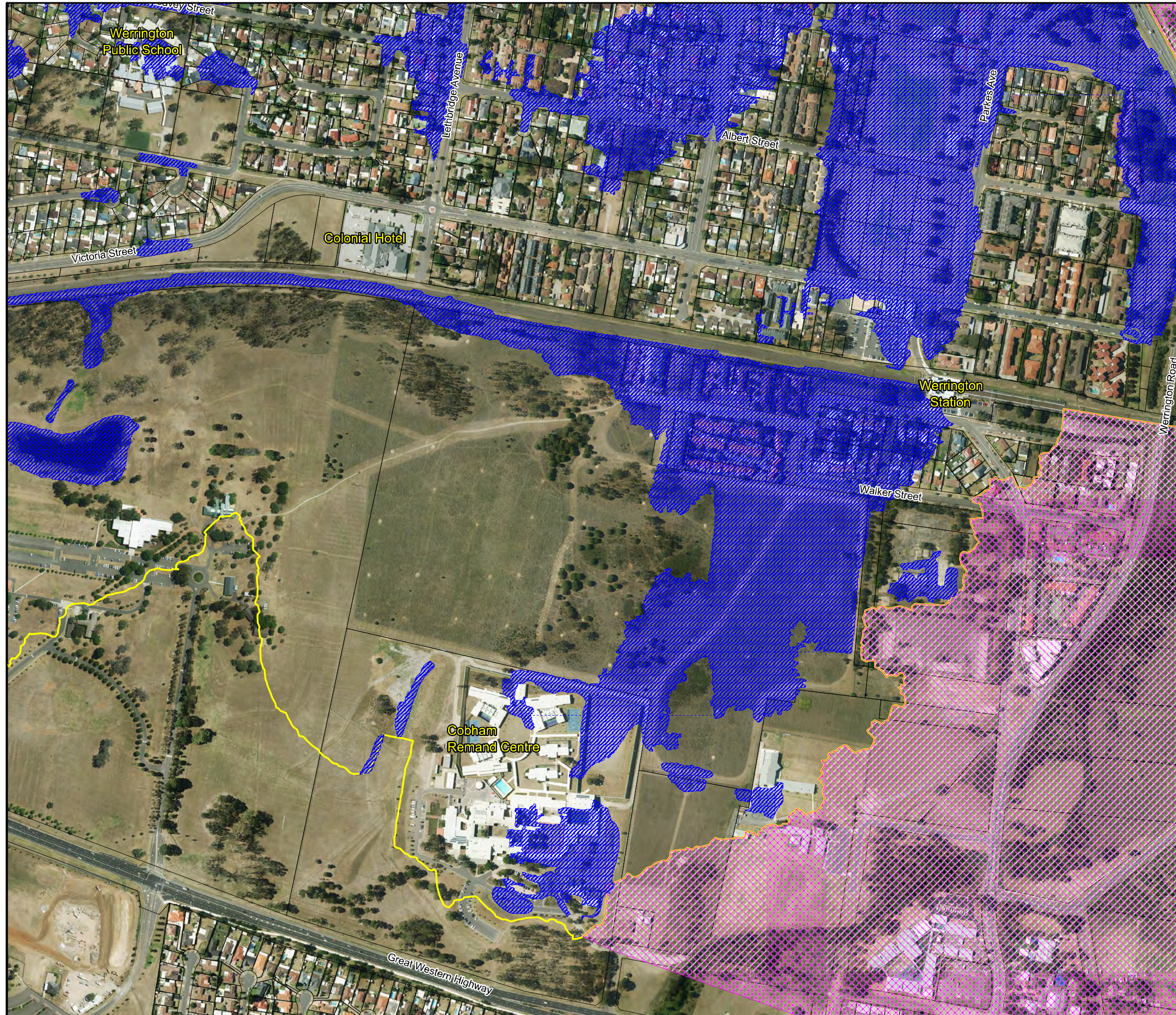
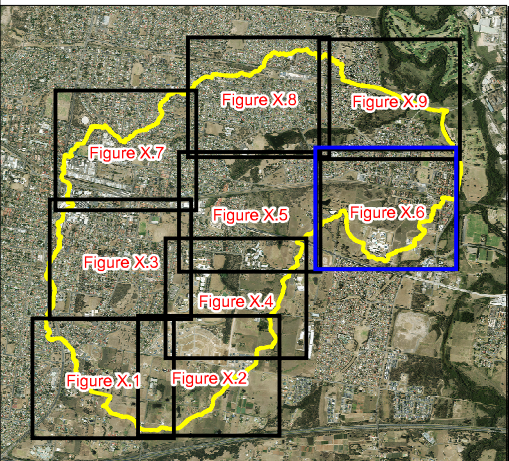
Figure 55.5:
Flood Planning Area

Prepared By:

 **Catchment Simulation Solutions**
Suite 2.01, 210 George St
Sydney, NSW 2000

File Name: Fig55.5 Flood Planning Area.wor





LEGEND

 Flood Planning Area

Notes:

Water depths less than 0.15m not displayed.
Aerial photograph date: 2014.

Inundation across this area not mapped. Please refer to "Updated South Creek Flood Study" - (Worley Parsons, 2015)

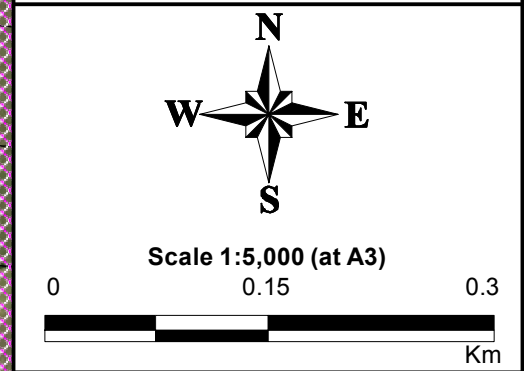

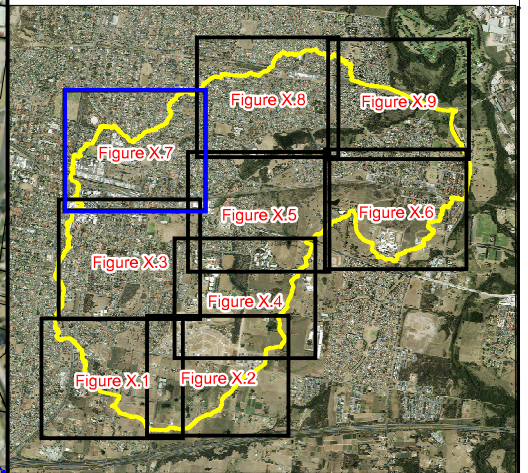


Figure 55.6:
Flood Planning Area

Prepared By:
 **Catchment Simulation Solutions**
Suite 2.01, 210 George St
Sydney, NSW 2000

File Name: Fig55.6 Flood Planning Area.wor



LEGEND

 Flood Planning Area

Notes:

Water depths less than 0.15m not displayed.
Aerial photograph date: 2014.

Inundation across this area not mapped. Please refer to "Updated South Creek Flood Study" - (Worley Parsons, 2015)

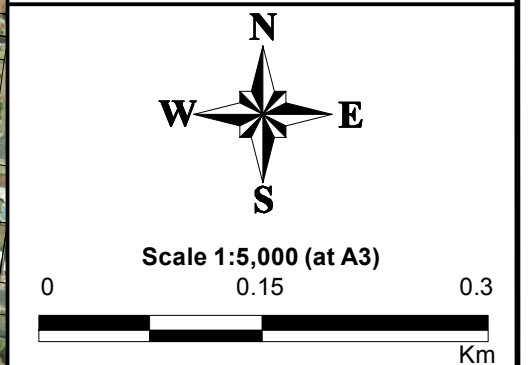

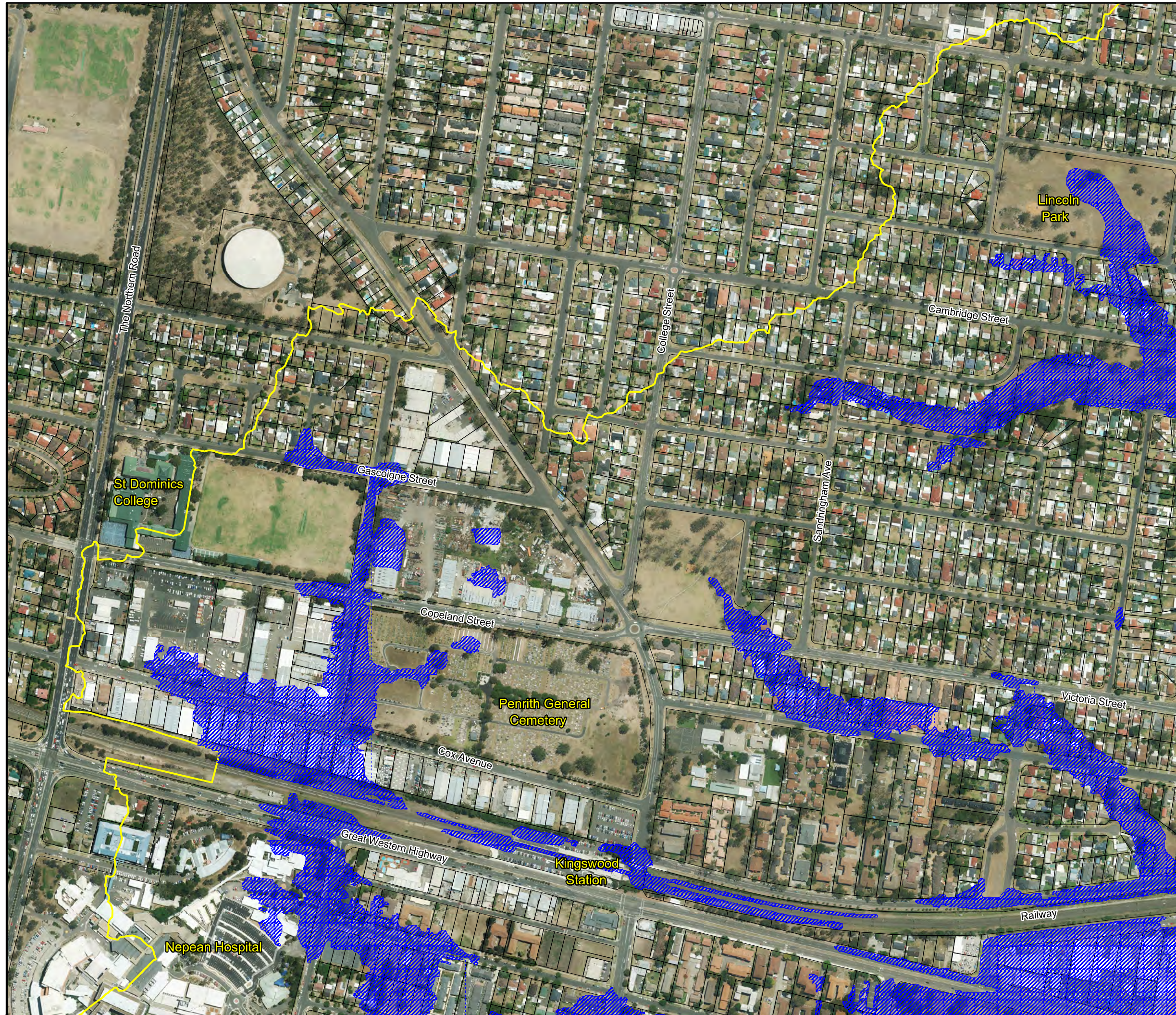


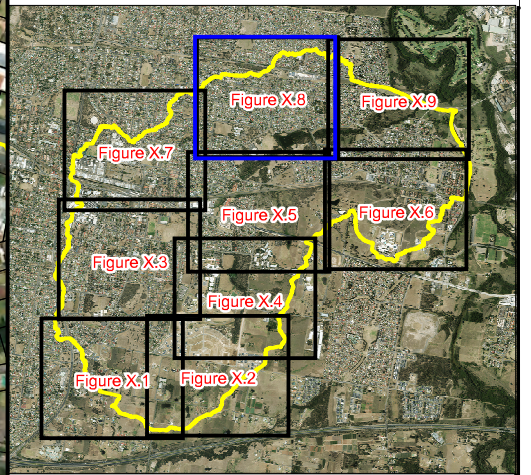
Figure 55.7:
Flood Planning Area

Prepared By:

 **Catchment Simulation Solutions**
Suite 2.01, 210 George St
Sydney, NSW 2000

File Name: Fig55.7 Flood Planning Area.wor





LEGEND

 Flood Planning Area

Notes:

Water depths less than 0.15m not displayed.
Aerial photograph date: 2014.

Inundation across this area not mapped. Please refer to "Updated South Creek Flood Study" - (Worley Parsons, 2015)

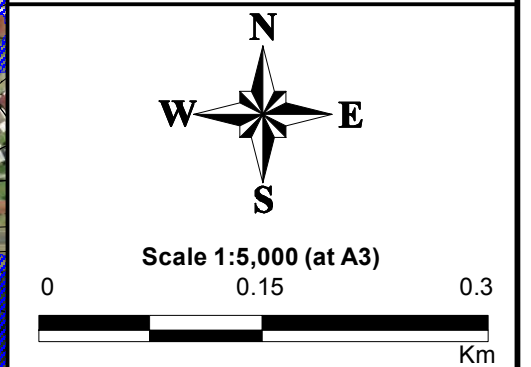



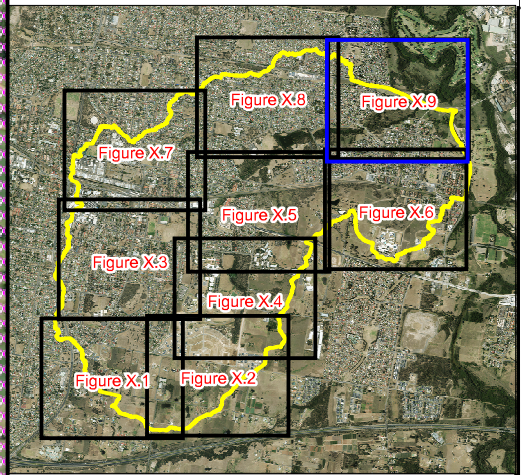
Figure 55.8:
Flood Planning Area

Prepared By:

 **Catchment Simulation Solutions**
Suite 2.01, 210 George St
Sydney, NSW 2000

File Name: Fig55.8 Flood Planning Area.wor





LEGEND

 Flood Planning Area

Notes:

Water depths less than 0.15m not displayed.
Aerial photograph date: 2014.

Inundation across this area not mapped. Please refer to "Updated South Creek Flood Study" - (Worley Parsons, 2015)

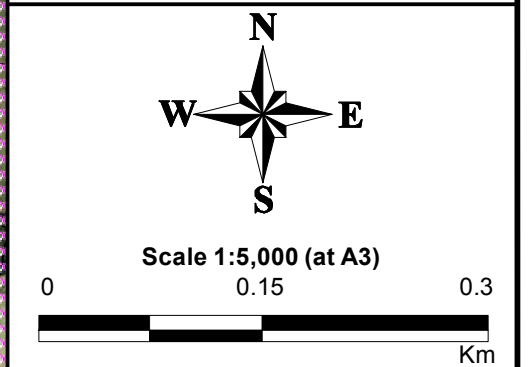



Figure 55.9:
Flood Planning Area

Prepared By:

 **Catchment Simulation Solutions**
Suite 2.01, 210 George St
Sydney, NSW 2000

File Name: Fig55.9 Flood Planning Area.wor

