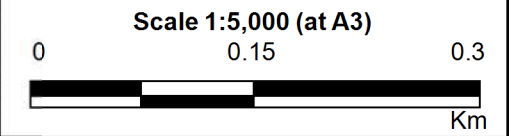
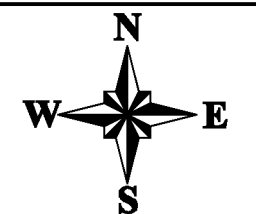


LEGEND

Flood Level (mAHD)	
■ 20	— 40 Major Peak Water Level Contour (1m Intervals)
■ 30	— Minor Peak Water Level Contour (0.25m Intervals)
■ 40	
■ 50	
■ 60	
■ 70	
■ 80	
	Drainage Easement

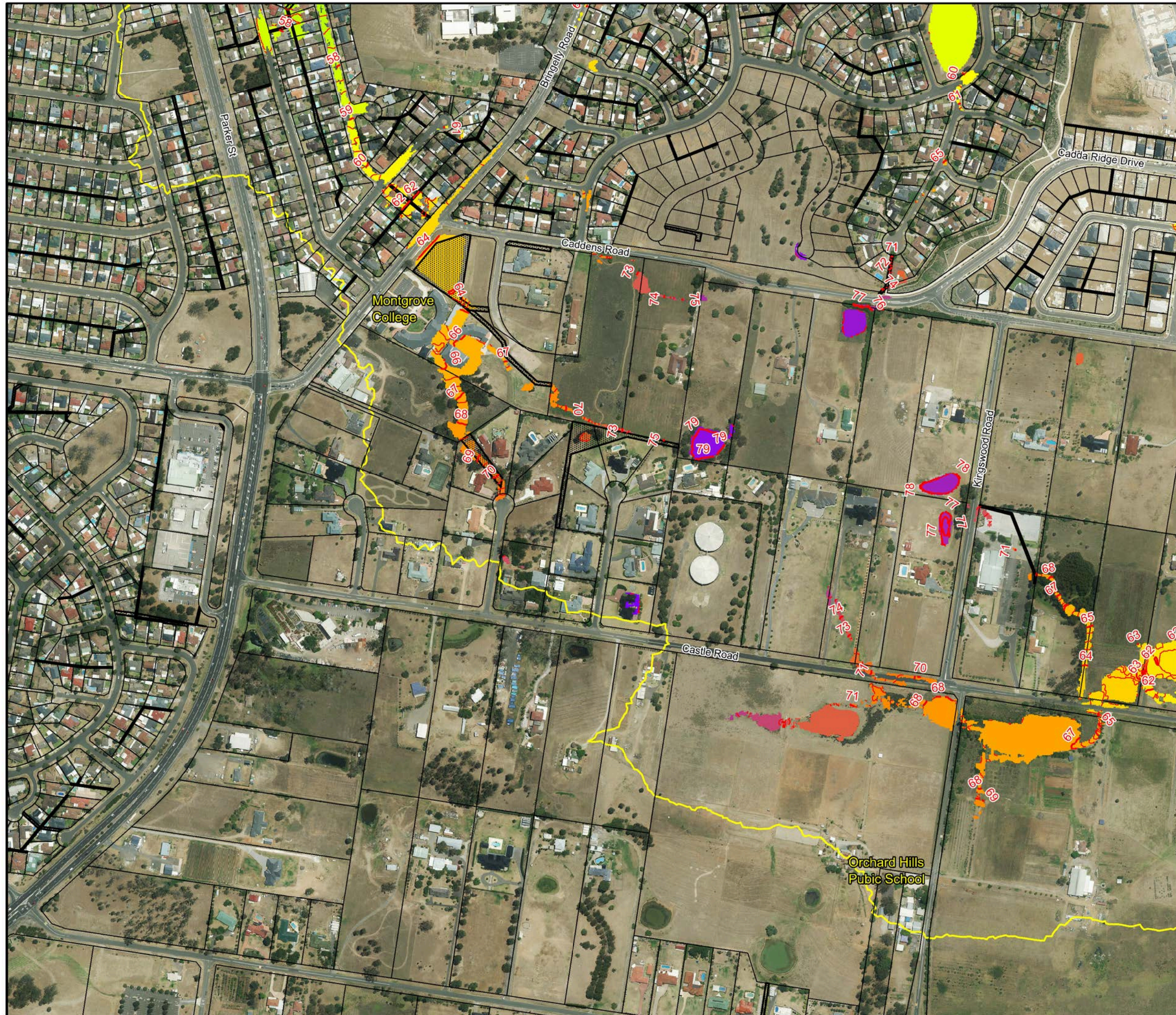
Notes:
 Water depths less than 0.15m not displayed.
 Aerial photograph date: 2014.
 Inundation across this area not mapped. Please refer to "Updated South Creek Flood Study" - (Worley Parsons, 2015)

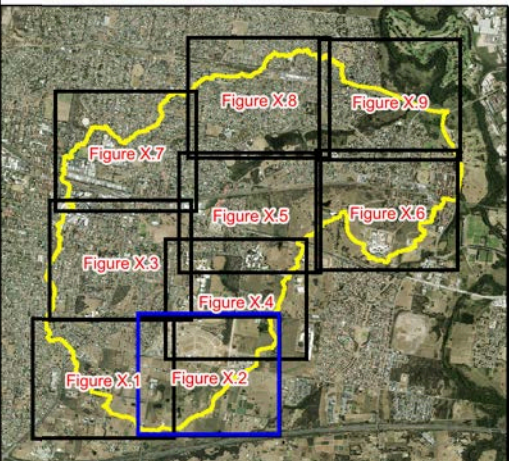


**Figure 28.1:
Peak Design Floodwater Levels for the 1% AEP Flood**

Prepared By:
Catchment Simulation Solutions
 Suite 2.01, 210 George St
 Sydney, NSW 2000

File Name: Fig28.1 Design floodwater levels for 1% AEP.wor





LEGEND

Flood Level (mAHD)	
■ 20	— 40 Major Peak Water Level Contour (1m Intervals)
■ 30	— Minor Peak Water Level Contour (0.25m Intervals)
■ 40	
■ 50	
■ 60	
■ 70	
■ 80	
Drainage Easement	

Notes:
 Water depths less than 0.15m not displayed.
 Aerial photograph date: 2014.
 Inundation across this area not mapped. Please refer to "Updated South Creek Flood Study" - (Worley Parsons, 2015)

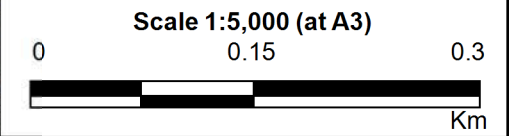
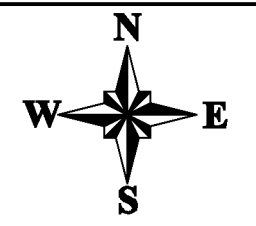
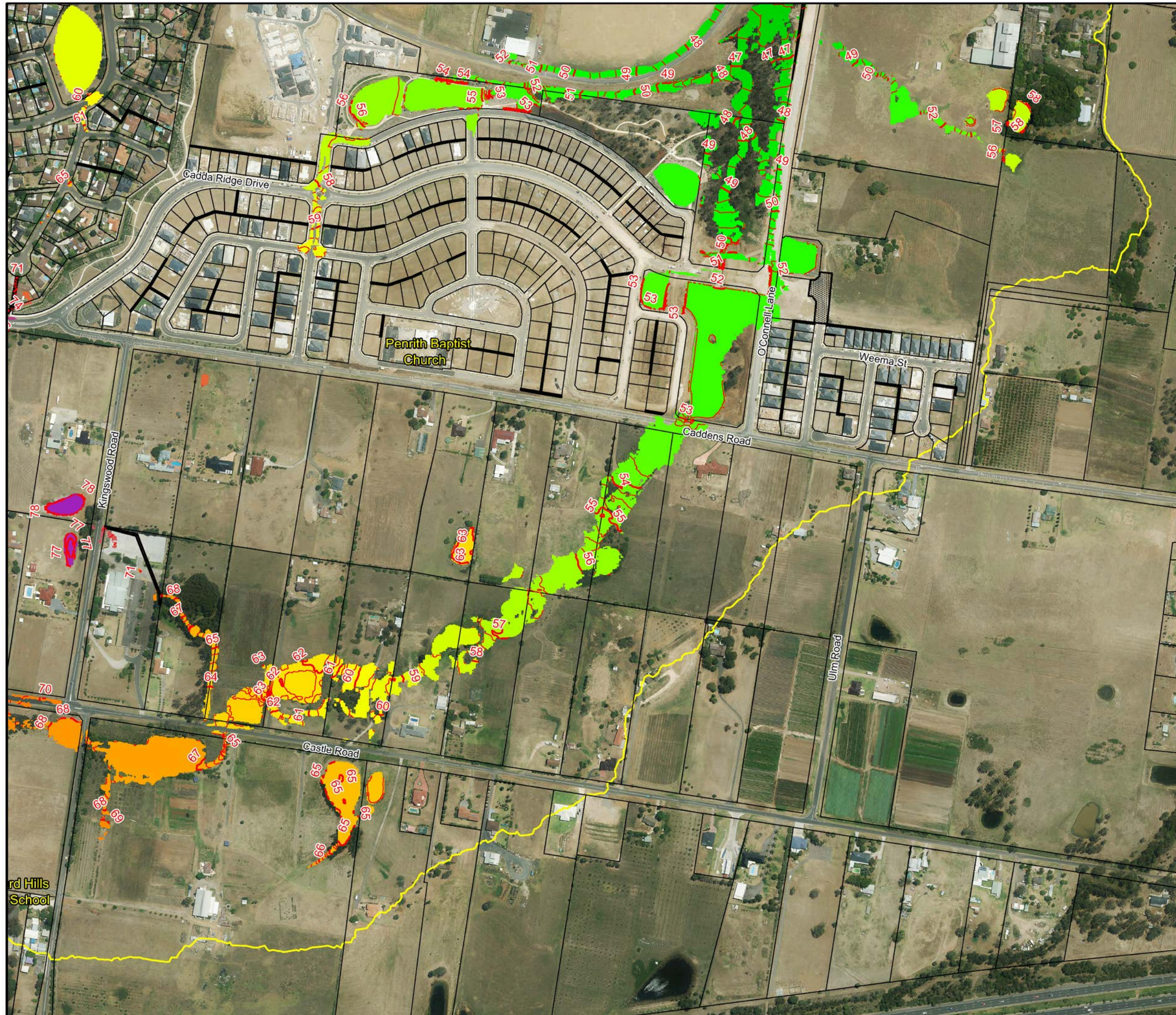


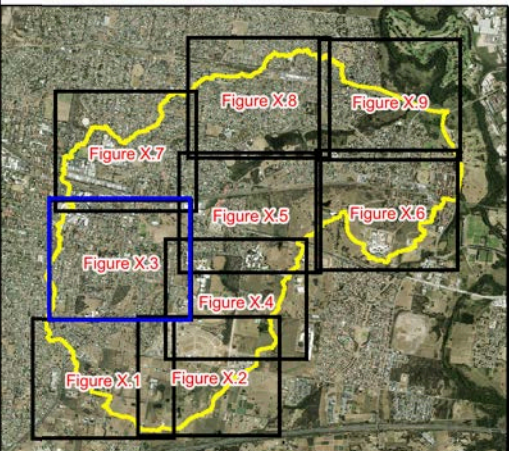
Figure 28.2:
Peak Design Floodwater Levels for the 1% AEP Flood

Prepared By:
Catchment Simulation Solutions
 Suite 2.01, 210 George St
 Sydney, NSW 2000

File Name: Fig28.2 Design floodwater levels for 1% AEP.wor



rd Hills School

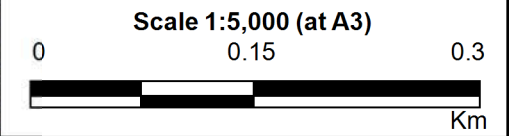
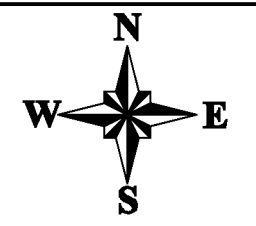


LEGEND

Flood Level (mAHD)	
■ 20	— 40 Major Peak Water Level Contour (1m Intervals)
■ 30	— Minor Peak Water Level Contour (0.25m Intervals)
■ 40	
■ 50	
■ 60	
■ 70	
■ 80	
	Drainage Easement

Notes:

Water depths less than 0.15m not displayed.
Aerial photograph date: 2014.
Inundation across this area not mapped. Please refer to "Updated South Creek Flood Study" - (Worley Parsons, 2015)

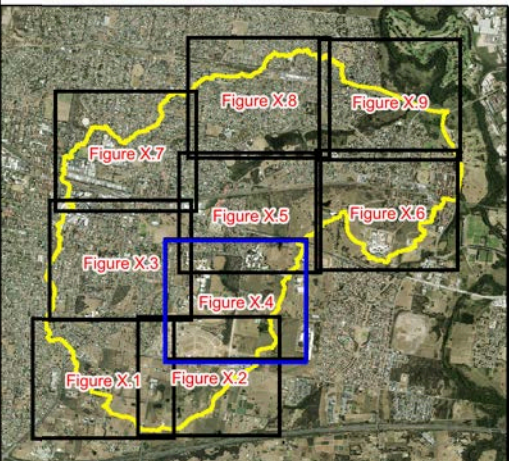


**Figure 28.3:
Peak Design Floodwater
Levels for
the 1% AEP Flood**

Prepared By:
 Catchment Simulation Solutions
Suite 2.01, 210 George St
Sydney, NSW 2000

File Name: Fig28.3 Design floodwater levels for 1% AEP.wor





LEGEND

Flood Level (mAHD)	
	20
	30
	40
	50
	60
	70
	80
	40 Major Peak Water Level Contour (1m Intervals)
	Minor Peak Water Level Contour (0.25m Intervals)
	Drainage Easement

Notes:

Water depths less than 0.15m not displayed.
Aerial photograph date: 2014.
Inundation across this area not mapped. Please refer to "Updated South Creek Flood Study" - (Worley Parsons, 2015)

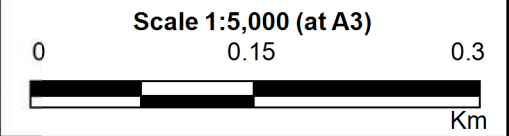
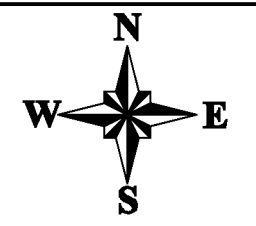
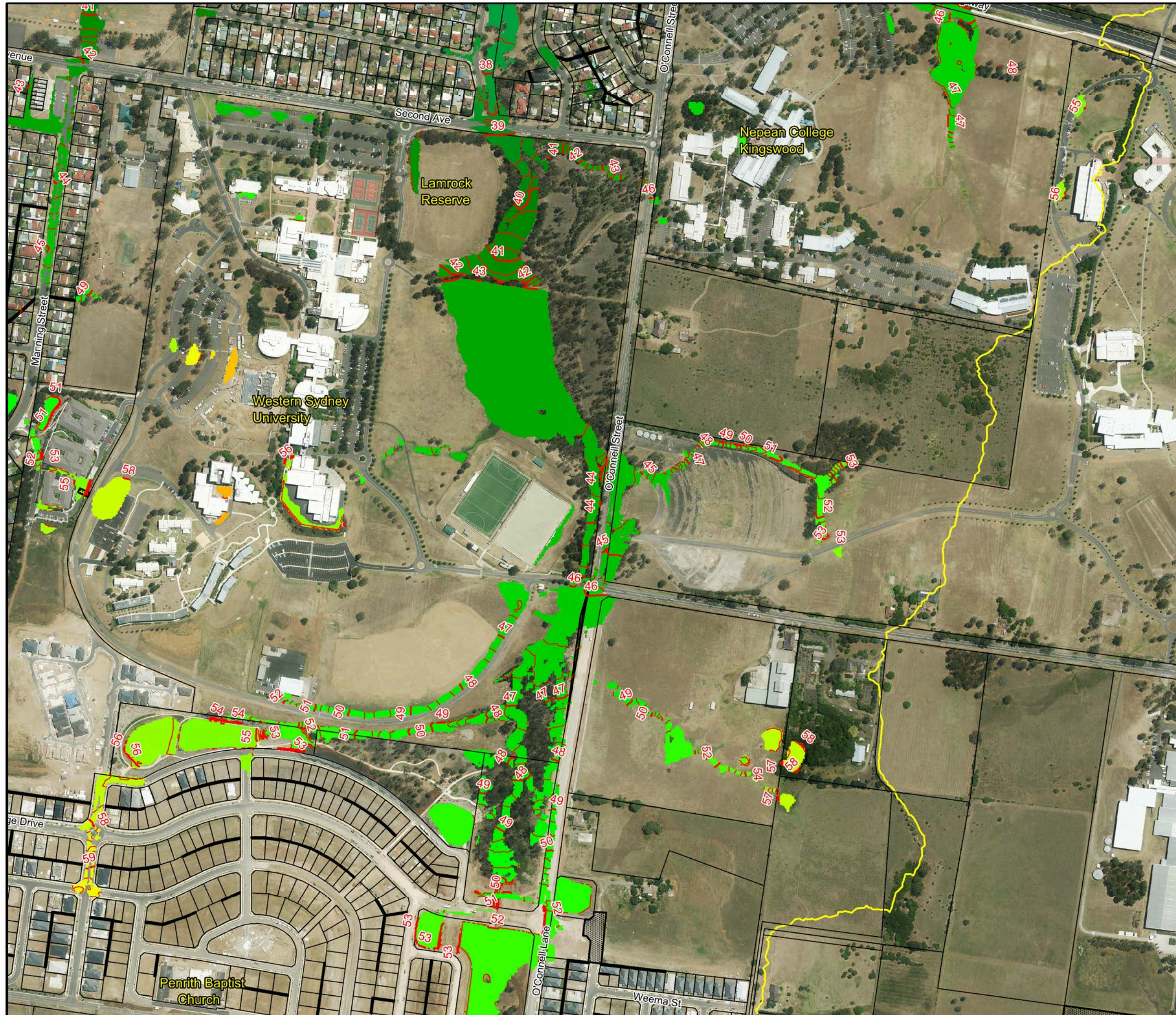
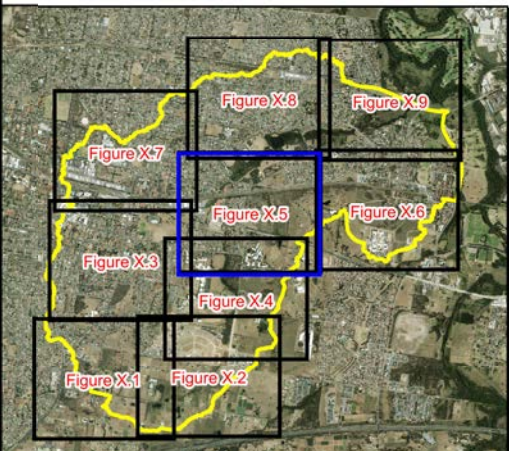


Figure 28.4:
Peak Design Floodwater Levels for the 1% AEP Flood

Prepared By:
 Catchment Simulation Solutions
Suite 2.01, 210 George St
Sydney, NSW 2000

File Name: Fig28.4 Design floodwater levels for 1% AEP.wor

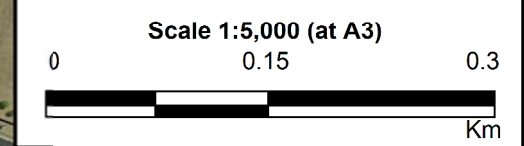
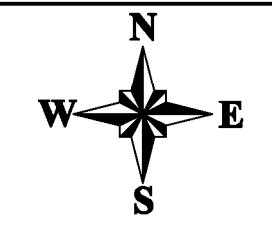




LEGEND

Flood Level (mAHD)	
	20
	30
	40
	50
	60
	70
	80
	40 Major Peak Water Level Contour (1m Intervals)
	Minor Peak Water Level Contour (0.25m Intervals)
	Drainage Easement

Notes:
Water depths less than 0.15m not displayed.
Aerial photograph date: 2014.
Inundation across this area not mapped. Please refer to "Updated South Creek Flood Study" - (Worley Parsons, 2015)

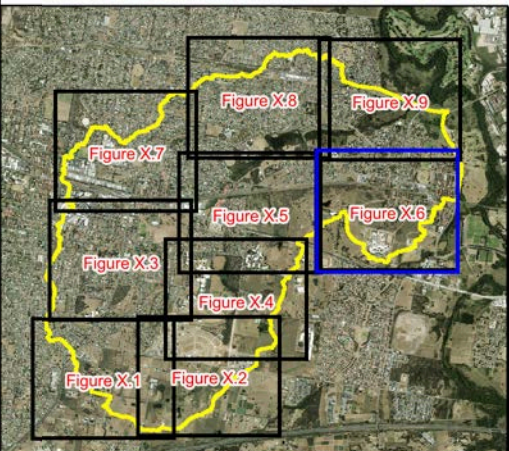


**Figure 28.5:
Peak Design Floodwater
Levels for
the 1% AEP Flood**

Prepared By:
 Catchment Simulation Solutions
Suite 2.01, 210 George St
Sydney, NSW 2000

File Name: Fig28.5 Design floodwater levels for 1% AEP.wor





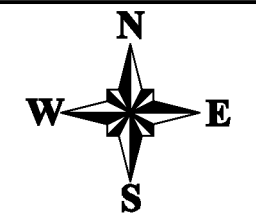
LEGEND

Flood Level (mAHD)	
■ 20	— 40 Major Peak Water Level Contour (1m Intervals)
■ 30	— Minor Peak Water Level Contour (0.25m Intervals)
■ 40	
■ 50	
■ 60	
■ 70	
■ 80	
	Drainage Easement

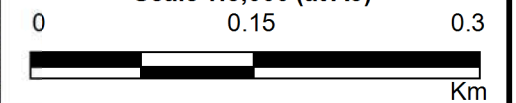
Notes:

Water depths less than 0.15m not displayed.
Aerial photograph date: 2014.

Inundation across this area not mapped. Please refer to "Updated South Creek Flood Study" - (Worley Parsons, 2015)



Scale 1:5,000 (at A3)

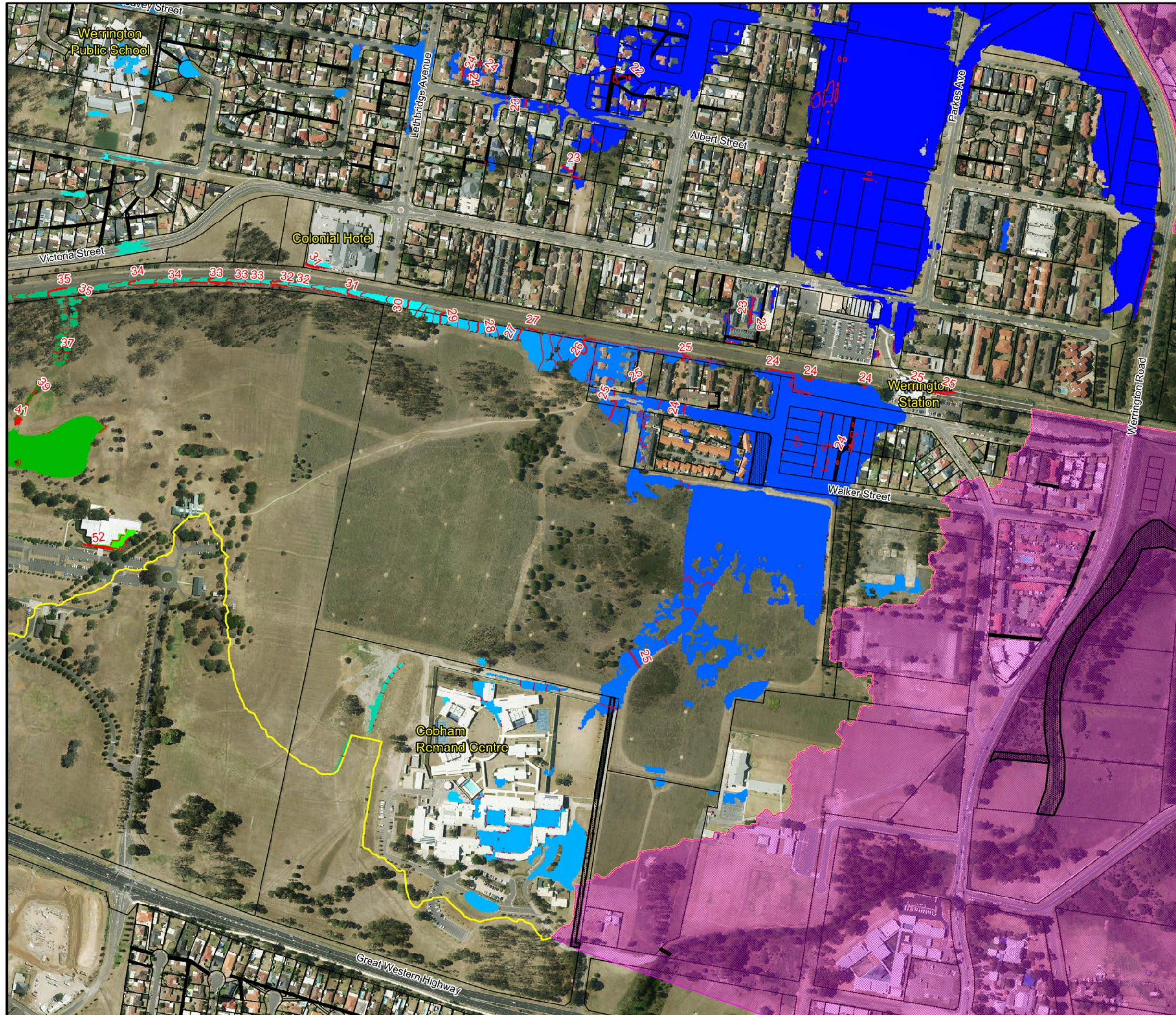


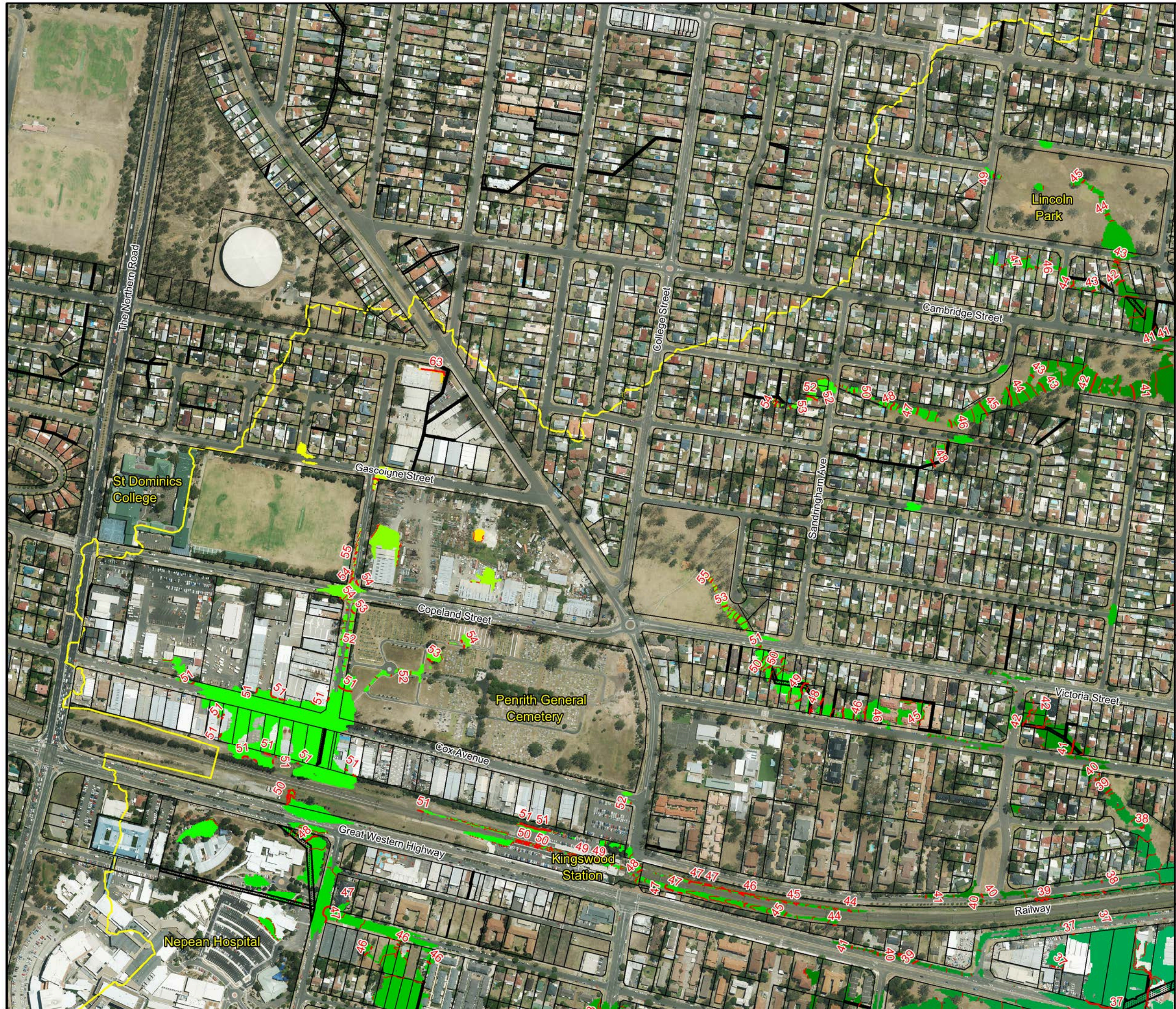
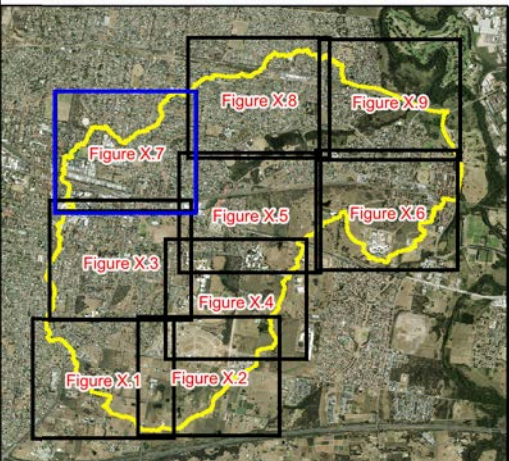
**Figure 28.6:
Peak Design Floodwater
Levels for
the 1% AEP Flood**

Prepared By:

Catchment Simulation Solutions
Suite 2.01, 210 George St
Sydney, NSW 2000

File Name: Fig28.6 Design floodwater levels for 1% AEP.wor





LEGEND

Flood Level (mAHD)	
■ 20	— 40 Major Peak Water Level Contour (1m Intervals)
■ 30	— Minor Peak Water Level Contour (0.25m Intervals)
■ 40	
■ 50	
■ 60	
■ 70	
■ 80	
	Drainage Easement

Notes:
 Water depths less than 0.15m not displayed.
 Aerial photograph date: 2014.
 Inundation across this area not mapped. Please refer to "Updated South Creek Flood Study" - (Worley Parsons, 2015)

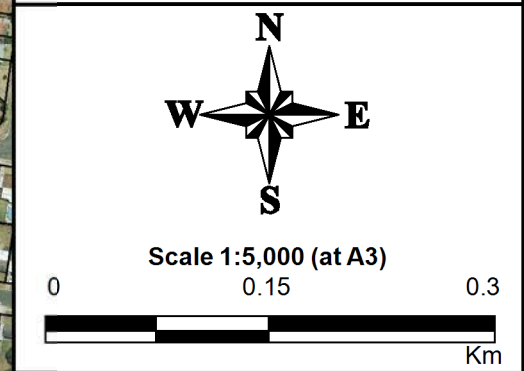
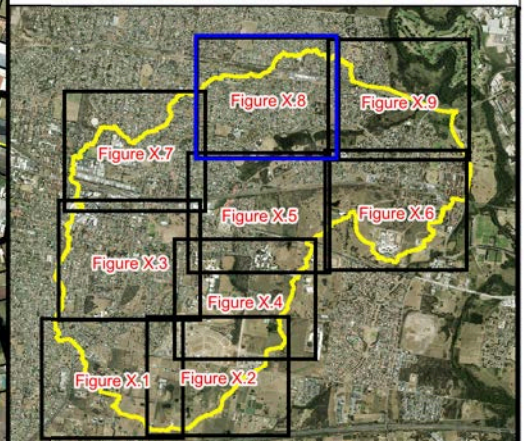


Figure 28.7:
Peak Design Floodwater Levels for the 1% AEP Flood

Prepared By:
Catchment Simulation Solutions
 Suite 2.01, 210 George St
 Sydney, NSW 2000

File Name: Fig28.7 Design floodwater levels for 1% AEP.wor



LEGEND

Flood Level (mAHD)	
■ 20	— 40 Major Peak Water Level Contour (1m Intervals)
■ 30	— Minor Peak Water Level Contour (0.25m Intervals)
■ 40	
■ 50	
■ 60	
■ 70	
■ 80	
	Drainage Easement

Notes:

Water depths less than 0.15m not displayed.
Aerial photograph date: 2014.

Inundation across this area not mapped. Please refer to "Updated South Creek Flood Study" - (Worley Parsons, 2015)

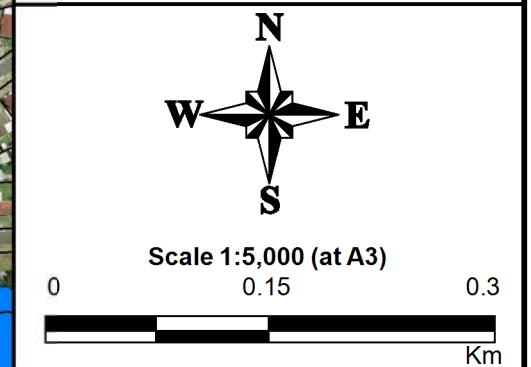
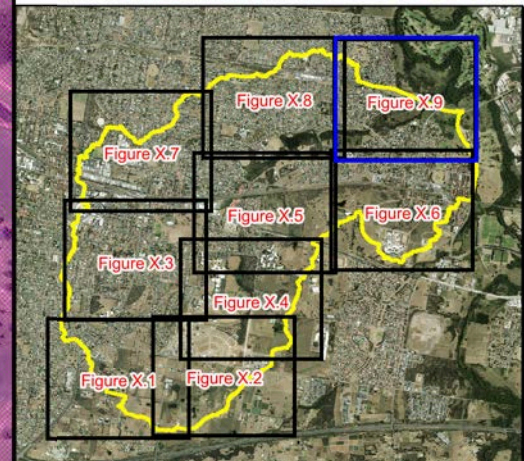


Figure 28.8:
Peak Design Floodwater Levels for the 1% AEP Flood

Prepared By:
Catchment Simulation Solutions
Suite 2.01, 210 George St
Sydney, NSW 2000

File Name: Fig28.8 Design floodwater levels for 1% AEP.wor



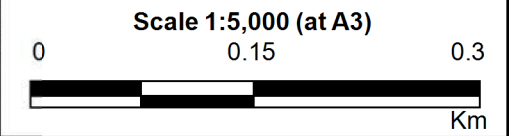
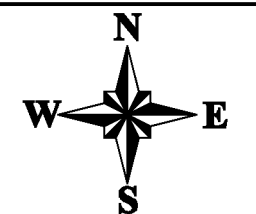


LEGEND

Flood Level (mAHD)	
■ 20	— 40 Major Peak Water Level Contour (1m Intervals)
■ 30	— Minor Peak Water Level Contour (0.25m Intervals)
■ 40	
■ 50	
■ 60	
■ 70	
■ 80	
	Drainage Easement

Notes:

Water depths less than 0.15m not displayed.
Aerial photograph date: 2014.
Inundation across this area not mapped. Please refer to "Updated South Creek Flood Study" - (Worley Parsons, 2015)



**Figure 28.9:
Peak Design Floodwater
Levels for
the 1% AEP Flood**

Prepared By:
 Catchment Simulation Solutions
Suite 2.01, 210 George St
Sydney, NSW 2000

File Name: Fig28.9 Design floodwater levels for 1% AEP.wor

